

# IAMNano 2023

<https://www.iamnano2023.com/>

International workshop on Advanced and in-situ Microscopies of functional Nanomaterials and devices

June 28<sup>th</sup> – July 1<sup>st</sup>, 2023 | Kunibiki Messe, Matsue, Shimane

## Scope & Topics

**FIRST CIRCULAR**

IAMNano has started in Krakow, Poland (2012), and the subsequent IAMNano symposia took place in Rio de Janeiro, Brazil (2014), Hamburg, Germany (2015), Port Elizabeth, South Africa (2016), Singapore (2017), Hamburg, Germany (2018) and Duesseldorf Germany (2019). The workshop aims to provide a forum for researchers interested in applying advanced imaging and spectroscopy in electron microscopy, including aberration-corrected, in-situ, environmental, low-voltage electron microscopy, topical issues in materials science and engineering, and nanoscience. The topics of the workshop are:

- ❖ Advanced imaging with aberration-corrected TEM and STEM
- ❖ Phase and field imaging: holography, 4D-STEM, and DPC-STEM
- ❖ Advanced spectroscopy including EELS and EDS
- ❖ In-situ and environmental TEM and STEM
- ❖ Advanced characterization of functional nanomaterials and devices

## Call for papers for poster session

All the oral presentations will be given by invited speakers, but we invite contributions for the **POSTER SESSIONS** in this workshop. Every afternoon before dinners, we will have exiting poster session, which will be the highlight in this workshop. We are very welcome to your abstract (one-page). The accepted abstracts will be delivered as a printed booklet.

**Abstract submission deadline: Mar. 15<sup>th</sup>, 2023**

**Website: <https://www.iamnano2023.com>**

## Venue and Directions

**KUNIBIKI MESSE** (Shimane Prefectural Convention Center)

1-2-1, Gakuen-minami, Matsue, Shimane 690-0826, Japan

TEL: +81-852-24-1111

## About Matsue

Matsue is the capital city of Shimane Prefecture, located in west Japan, facing the Sea of Japan coast. There are two beautiful Lake-Shinji and -Nakaumi, and the spectacular island of Daikon is floated in the Lake Nakaumi. In the summer season, full of peony is blooming on this island, and many tourists enjoy such fantastic scenery. Matsue is also well known as 'Kamino-kuni' (the city of gods), and one of the gods broke down Yamata-no-Orochi (the eight-headed dragon), which can watch as an adventure show.



## Invited speakers

# IAMNano 2023

Angus Kirkland (Oxford University, UK)

Stephen Pennycook (Univ. Tennessee, USA)

Joachim Mayer (ER-C, Germany)

Rafal Dunin-Borkowski (ER-C, Germany)

Naoya Shibata (University of Tokyo, Japan)

Tsukasa Hirayama (JFCC, Japan)

Colin Ophus (LBNL, USA)

Kazu Suenaga (Osaka University, Japan)

Quentin Ramasse (SuperSTEM, UK)

Juan-Carlos Idrobo (ORNL, USA)

Masashi Watanabe (Leigh University, USA)

Andrew Yankovich (Chalmers Univ. Tech., Sweden)

Haimei Zheng (LBNL, USA)

Eva Olsson (Chalmers Univ. Tech., Sweden)

Robert Sinclair (Stanford University, USA)

Wolfgang Jaeger (CAU Kiel, Germany)

Eric Stach (Univ. Pennsylvania, USA)

Zonghoon Lee (UNIST, Korea)

Sang Ho Oh (SKKU, Korea)

Jianwei Miao (UCLA, USA)

Xiaoqing Pan (UC Irvin, USA)

Joanne Etheridge (Monash University, Australia)

Scott Findlay (Monash University, Australia)

Gu Lin (Tsinghua University, China)

Wu Zhou (UCAS, China)

Peng Gao (Peking University, China)

Peter Crozier (Arizona State University, USA)

Xiuliang Ma (Shenyang National Laboratory, China)

Si-Young Choi (POSTECH, Korea)

Kenji Tsuda (Tohoku University, Japan)

Ryo Ishikawa (University of Tokyo, Japan)

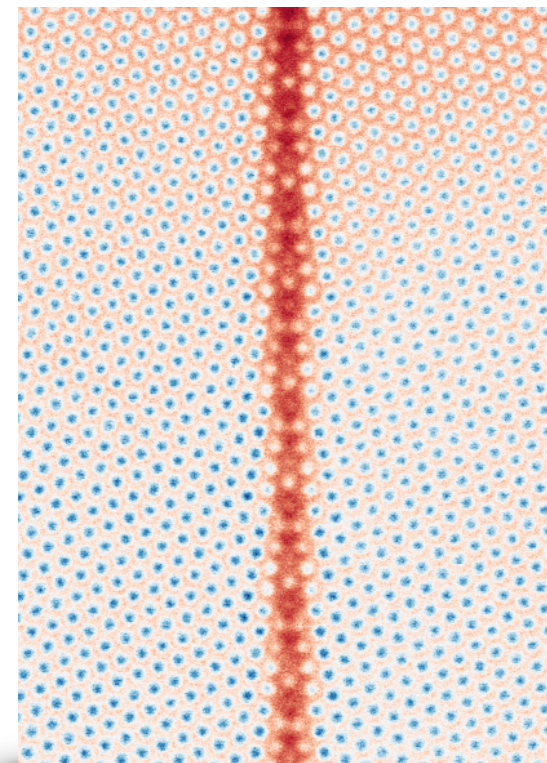
Kazuto Arakawa (Shimane University, Japan)

Koji Kimoto (NIMS, Japan)

Yasukazu Murakami (Kyushu University)

Gerhard Dehm (MPIE Düsseldorf, Germany)

Yimei Zhu (BNL, USA)



### Local Organizing Committee

**Yuichi Ikuhara** – The University of Tokyo, Japan

**Naoya Shibata** – The University of Tokyo, Japan

**Ryo Ishikawa** – The University of Tokyo, Japan

### Scientific Advisory Board

**Rafal Dunin-Borkowski** – ER-C Juelich, Germany

**Wolfgang Jaeger** – CAU Kiel, Germany

**Joachim Mayer** – RWTH University Aachen, Germany

**Eva Olsson** – Chalmers University, Sweden

**Robert Sinclair** – Stanford University, USA